

Member Regulatory Workshop

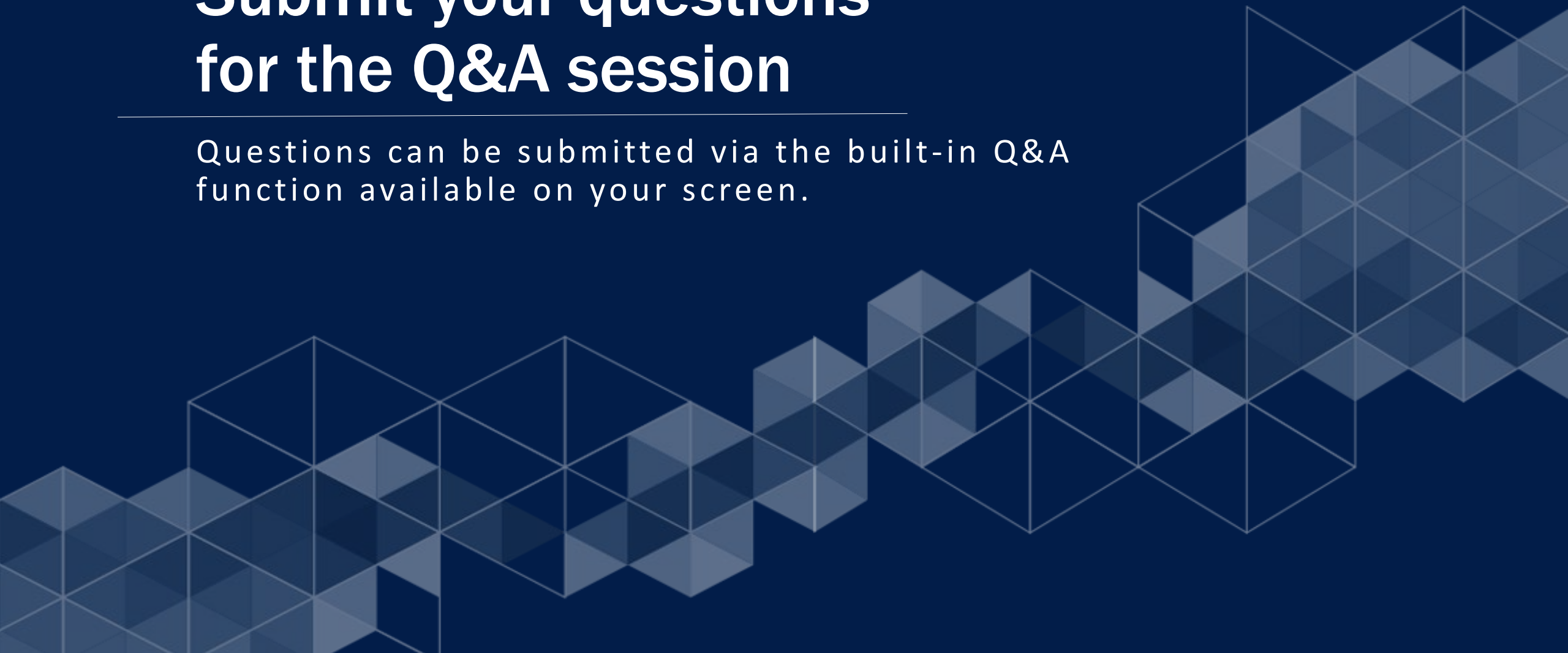
Returning to Onsite Exams

June 1, 2022



Submit your questions for the Q&A session

Questions can be submitted via the built-in Q&A function available on your screen.



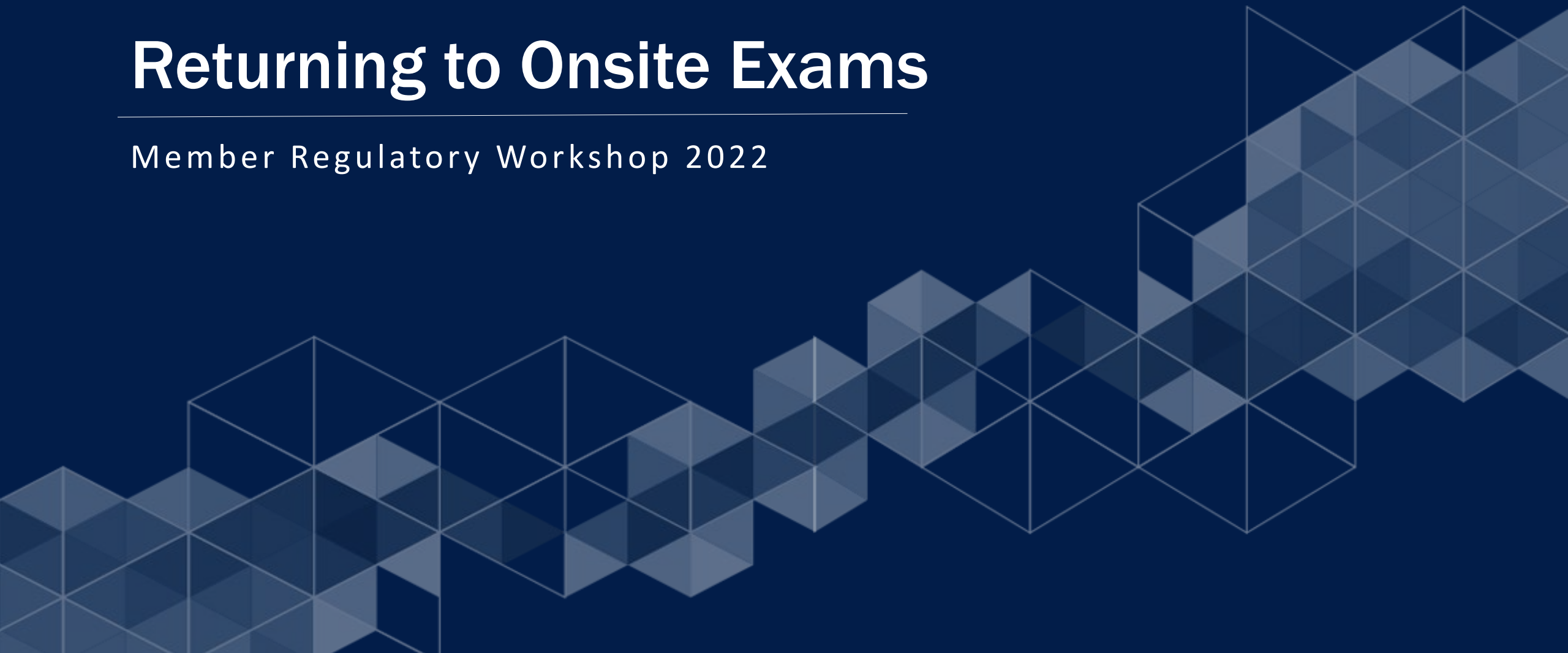
Returning to Onsite Exams

An archived version of today's session along with all other sessions for the Member Regulatory Workshop will be available on NFA's website in the coming days.

A decorative background pattern of overlapping, semi-transparent hexagons in various shades of blue, creating a 3D effect. The pattern is more dense on the right side of the slide and fades out towards the left.

Returning to Onsite Exams

Member Regulatory Workshop 2022



Return to Onsite Exams



- Return to onsite exams
 - Firm communication
 - Covid Vaccination
 - International exams
- Exam process

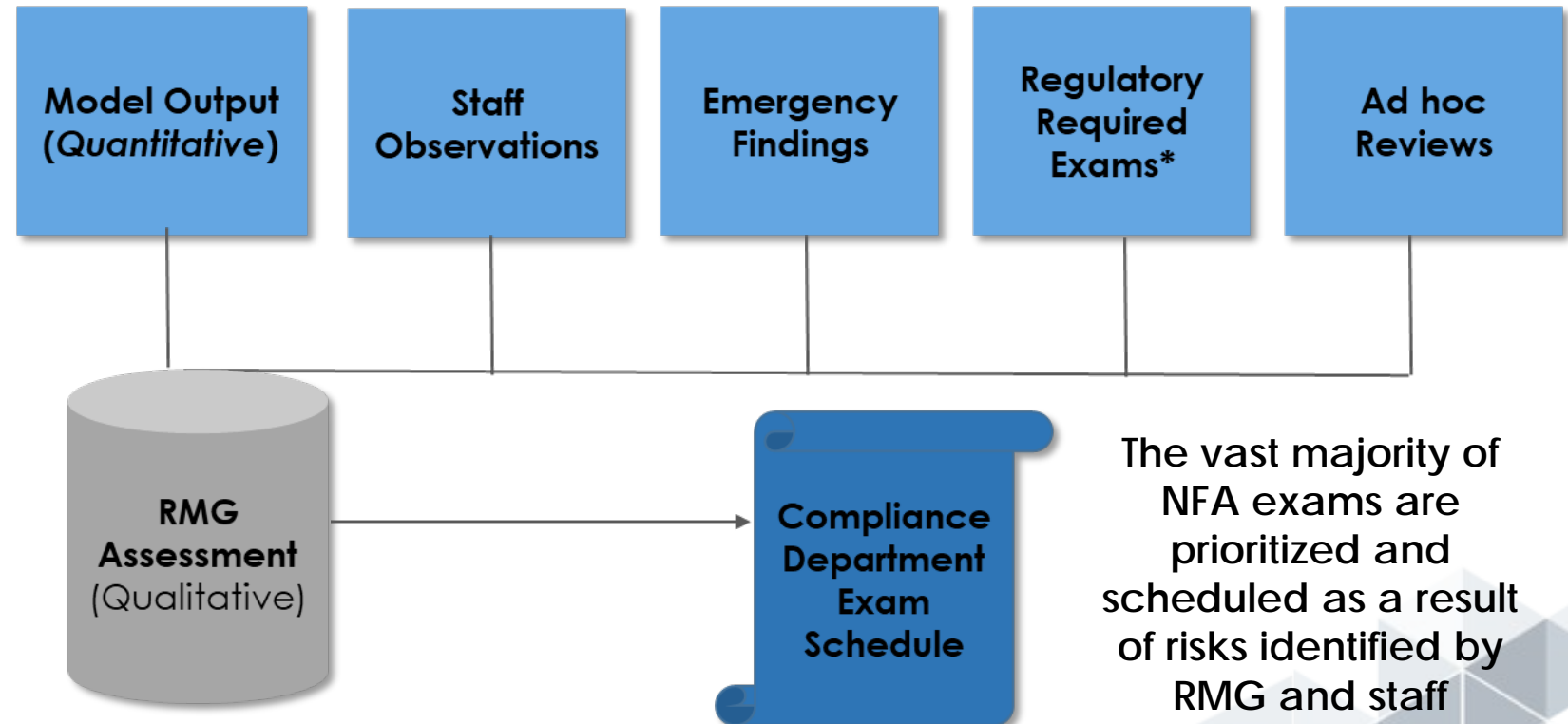


Risk-Based Examination Approach



1. Prioritize list of candidate firms
2. Schedule based on prioritized firms, available resources, and logistical constraints
3. Relay pertinent risk information to exam teams

Approach to scheduling is influenced by the following sources:



The vast majority of NFA exams are prioritized and scheduled as a result of risks identified by RMG and staff

Pre-Exam Work



- Announce exam
- Operations questionnaire
- Operations Call
- Tailored initial document request list
- Visitor Policy / In-office plan

Fieldwork



- Virtual / Hybrid / Onsite
- Interviewing key personnel
- Reviewing Systems Controls
- Reviewing records
- Monitoring firm operations
- Areas of Testing



Exit Interviews / Exam Report



- Formal exit interview
- Report Issuance
- Response letter / corrective action

Contact NFA



Jonathan Flanagan
jflanagan@nfa.futures.org | 212-513-6033

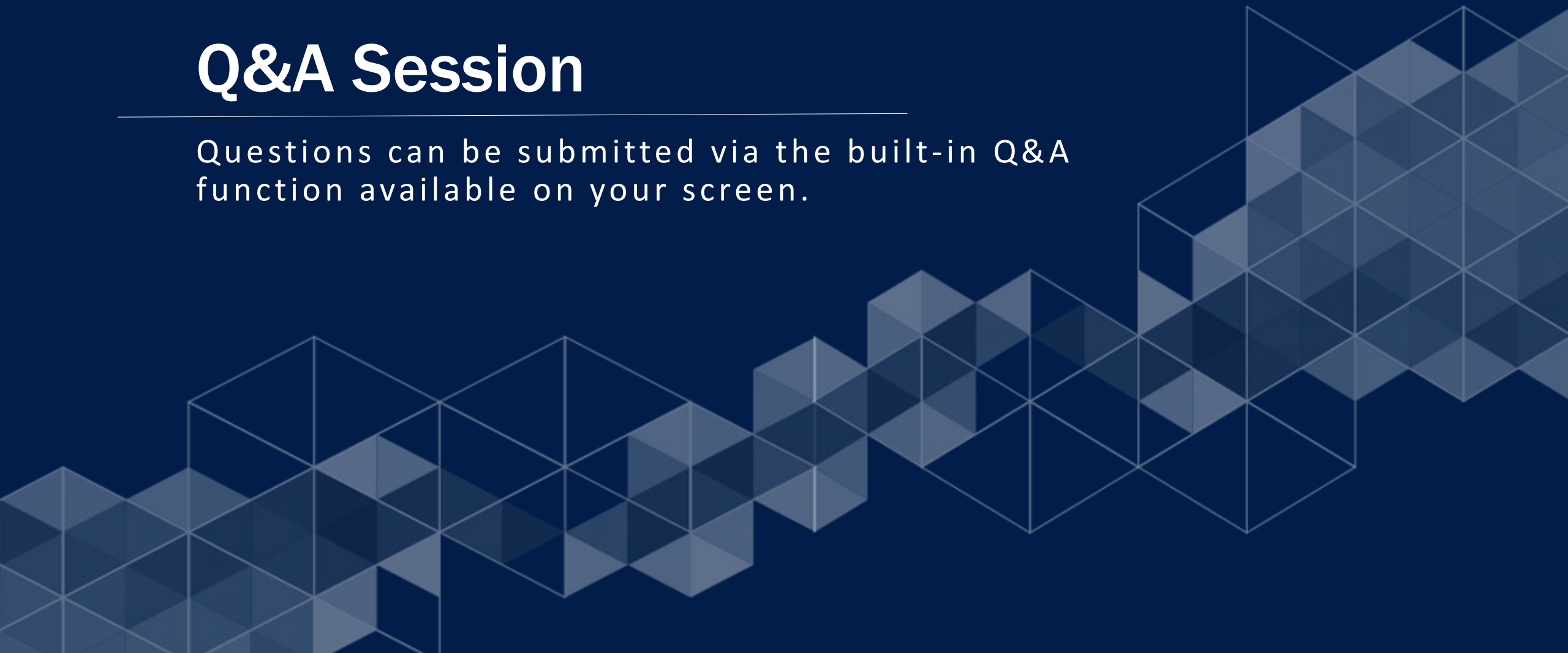
Tammy Wong
twong@nfa.futures.org | 212-513-6061

Thomas Hart
thart@nfa.futures.org | 312-781-7880



Q&A Session

Questions can be submitted via the built-in Q&A function available on your screen.



Returning to Onsite Exams

An archived version of today's session along with all other sessions for the Member Regulatory Workshop will be available on NFA's website in the coming days.

Member Regulatory Workshop

Swaps: Common Exam Findings & Reminders will begin at 11:30 a.m. –
12:15 p.m. CT/12:30 – 1:15 p.m. ET.